

# Panda

## Internet Security 2013

### Quick Start Guide



#### **Important!**

On the CD envelope, you will find the **activation code** with which you can activate the product. Please keep it in a safe place.

If you bought the product online, you will have received an email message with all the information you need to activate it.

Use of this product is subject to acceptance of the Panda Security End User License Agreement enclosed.

Panda Security™. TruPrevent is registered in the US Patent and Trademark office. Windows Vista and Windows 7 are trademarks or registered trademarks of the Microsoft Corporation in the United States and other countries.

All other product names may be registered trademarks of their respective companies.

Panda Security, S.L., Gran Vía Don Diego López de Haro 4, 48001 Bilbao, Spain. BI-816/2012.

© Panda Security 2012. All rights reserved.

# UNINSTALLING OTHER PROGRAMS

## Important!

If you have an antivirus installed on your computer, please completely uninstall it before starting to install Panda Internet Security 2013.

To do so, follow these steps:

1. Click the Windows **Start** button and select **Control Panel**.
2. Double-click **Add or Remove programs (Programs and features)** if you have Windows 7 or Windows Vista).
3. Select the program that you want to uninstall and click **Remove (Uninstall)** if you have Windows 7 or Windows Vista).
4. Follow the steps in the uninstallation wizard.



# INSTALLATION

Follow the steps below to install the product correctly.



## IMPORTANT NOTE:

If you bought the product through Panda Security's online store or another authorized website, run the downloaded file. The installation wizard will guide you through the installation process.

## STARTING INSTALLATION

Insert the CD or USB flash drive into your computer's CD/DVD drive or USB port.

1. 1. If you are installing from a CD/USB flash drive and your computer does NOT have AutoPlay enabled, installation will not start when you insert the CD/USB device. In this case, follow the steps below:
  - 1a. Double-click **My Computer** on your computer's Desktop (if you have Windows 7 or Windows Vista, click **Computer**).
  - 1b. Right-click the CD/DVD/USB drive corresponding to the CD/USB device.
  - 1c. Click **Explore**.
  - 1d. Double-click the **Install.exe** file to start the installation wizard.

## INSTALLATION PROCESS

1. The welcome screen of the installation wizard includes a link to the license agreement. Click **Accept and Install** to start the installation process.
2. Select the language in which you want to install the program and the installation folder.

If you want to change the default installation path, click **Change** and specify the required path.



3. Click **Next**.

Panda Internet Security 2013 will copy the files needed to install the different types of protection against malicious software.

4. When the files have been copied to your computer, you are prompted to restart the computer.

We advise you to restart your computer as soon as possible to start enjoying the security offered by Panda Internet Security 2013.

Once you have followed these steps, your PC will be completely protected against viruses and other threats.



## Installing from the CD/USB flash drive

If there is an error during the installation process, you can install the product manually from the CD/USB flash drive. On the installation screen, click **Install from the CD**.

1. The Panda Internet Security 2013 installation wizard appears.
2. Select the language in which you want to install the program and click **OK**.
3. You will see the welcome screen of the installation wizard. Click **Next**.
4. On the **License Agreement** screen, click **Yes** to agree to the terms of the agreement. If you click **No**, the installation process will not continue.
5. On the installation type screen, keep the **Typical installation** option selected to install the normal components of Panda Internet Security 2013. Click **Next** to continue.



### NOTES:

- This guide explains a typical installation of Panda Internet Security 2013. If you have more advanced knowledge and would like to select the protection modules to install, you can do this by selecting the option **Custom installation** during the installation process. The Minimum installation is only recommended for computers with less than 256MB of RAM.
- By default, only the protection most suitable for your computer's memory will be installed.

Panda Internet Security 2013 will copy the files needed to install the different types of protection against malicious software.

6. When the files have been copied to your computer, you will see an agreement for collaborating with Panda Security. If you want, you can allow anonymous sending of information about threats that Panda Internet Security 2013 detected on your computer, to help us keep our information up-to-date about the impact of viruses around the world.

Similarly, we advise you to allow automatic sending of quarantined items to us. This way, our laboratory will be able to provide you with a solution as quickly as possible.

7. Click **Next** to continue.
8. A screen will now appear telling you that the installation is complete and you need to restart the computer. Select the relevant checkbox.

Make sure to take the CD/USB device out of the corresponding drive/port before clicking **Finish**. Otherwise, your computer will start from the CD/USB device, as this also acts as a rescue disk. Refer to the Panda Internet Security 2013 Help for more information.





# PRODUCT ACTIVATION

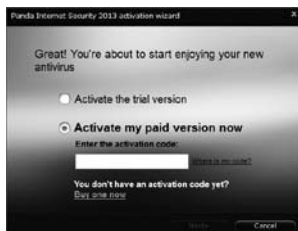
Once the computer has restarted, activate the product in order to benefit from the following services:

- Activation of the product's different modules.
- Daily automatic updates, for the duration of your product license.
- Communication with our Collective Intelligence platform (Panda's cloud).

The installation wizard will display the following screen:

If you select **Activate the trial version**, simply click **Next** and your trial version will activate automatically.

If you want to **activate the paid version**, you will have to enter the activation code.



## WHERE CAN I FIND THE ACTIVATION CODE?

- If you have a CD, you will find the code on the CD envelope.
- If you bought the product on the Internet, you will have received the activation code via email.

Click **Next**. The following screen is displayed:


Enter the data requested by the wizard:

- Your email address (required).
- Your client number (optional). You only need to enter this data if you are already a Panda Security client. This will allow you to extend your contracted service period.
- Country: Select it from the drop-down list.



If you can't remember your client details, go to the Password Reminder section of the Panda Security website: <http://www.pandasecurity.com/homeusers/support/details/password/>.

Additionally, you can activate the product from the Panda Internet Security 2013 main screen. To do this, follow these steps:

1. Open Panda Internet Security 2013 by double-clicking the program's shortcut on your Desktop.
2. In the top-right corner of the Panda Internet Security 2013 screen, click the  icon and select Activate the product.
3. Select if you want to try the product or activate the version you have purchased. Enter the data requested by the wizard.



**NOTE:**

You can also start this wizard from the pop-up warnings that appear reminding you to activate Panda Internet Security 2013.



**IMPORTANT:**

- If you need to activate the product again or activate additional licenses, you will have to enter the **activation code** and **client number** (optional) that you received by email when you first activated the product. Make sure you also include the **same email address** you used when first activating the product.
- Please refer to the **FAQs** section for more information.

If you are not a registered client, the last step of the wizard will invite you to register and enjoy the following additional benefits:

- **Access to the clients area**, where you can see your client details and download the latest product versions.
- **Access to other Panda Security services**, such as technical support and additional tools.
- **Practical tips and tutorials.**
- **Special offers.**



**NOTE:**

If you have any problems during the activation process, visit our Technical Support Center. There you will find the answers to the most frequently asked questions. <http://www.pandasecurity.com/homeusers/support>.

# UPDATES AND SCANS

The automatic updates of Panda Internet Security 2013 are carried out every day. These updates allow the program to recognize all known viruses and threats and keep your computer protected against them.

Even though Panda Internet Security 2013 updates automatically while your computer is connected to the Internet, you can also update it whenever you want, by following these steps:

1. Right-click on the Panda Internet Security 2013 icon in the *Taskbar* (next to the Windows clock).
2. In the menu that appears, click **Update**. A new screen will appear, click **Next** to start the process.



## NOTE:

- Remember that, for the program to update, your computer must be connected to the Internet.
- For Panda Internet Security 2013 to continue updating you must activate it. Please refer to the Product activation section for more information.

Once Panda Internet Security 2013 has updated correctly, you can run a full scan of your computer.

Follow these steps:

1. Open Panda Internet Security 2013 by clicking the program's shortcut on your Desktop.
2. Click **Scan**.
3. Click **Full scan**. The scan will start.

**NOTE:**


Bear in mind that a full scan of your computer may take several hours. This will depend on the speed of your computer and the amount of data stored on it. We advise you to run this scan when you are not using your computer.

**Once you have carried out this scan, your computer will be protected and free from all malicious software as well as intrusions and other threats.**

# OVERVIEW

Panda Internet Security 2013 is a complete security tool offering integrated protection for your computer with a range of complementary functions.

If you click the Panda Internet Security 2013 icon in the taskbar (next to the Windows clock), you will see the main program screen. Here you can see the status of each of the different protection modules.

Below, you'll find a brief description of each of these modules. If you would like more information on any of these, refer to the **Panda Internet Security 2013 Help**. To access this help, click the  icon in the top-right corner of the main program screen, and select the option **Panda IS 2013 Help**.

## **Protection against known threats: viruses, Trojans, spyware...**

Panda Internet Security 2013 detects and eliminates all types of known malicious software that could reach or leave your computer through any means (email, Internet downloads, file sharing, etc.).

## **Protection against unknown threats**

Thanks to the innovative **TruPrevent Technologies**, Panda Internet Security 2013 detects and blocks suspicious threats whose features have not yet been completely determined.

## **Firewall protection**

The personal firewall blocks unauthorized access to your computer while you are connected to the Internet or a local network.

## **Identity protection**

With Panda Internet Security 2013 you are protected against the most common types of Internet fraud: redirecting of phone connections to premium-rate numbers, unauthorized transmission of confidential information and access to Web pages controlled by fraudsters.

## **Anti-spam filter**

This keeps you protected from junk emails or spam, which normally contain advertising.

## **Parental control**

This prevents certain computer users from viewing inappropriate content (violence, pornography, etc.) on the Internet.

## **Protection against vulnerabilities**

This protects you against security flaws that could make your computer easy prey to all types of malicious software and hackers.

### **Backup copies**

Backup copies let you safeguard your files (documents, photos, video, music, etc.) in the event of accidental loss. You can back up files easily on an external drive, DVD or even online. This way, you can retrieve files when necessary.

### **Safe browsing**

This feature of Panda Internet Security 2013 lets you browse the Internet in a virtual environment, completely independent of your system, to guarantee the security of your computer while you use the Internet.

### **Home network management**

This system gives you information about the status of the protection on each of the computers on your home network (if your computer is connected to a network).

### **Remote access**

This lets you connect remotely and securely to your computer from any other computer on the Internet, and use it as if you were sitting in front of it.

### **Virtual keyboard**

Thanks to the virtual keyboard, you can prevent hackers from intercepting your passwords or other confidential data entered on the Web.

### **Multimedia/gaming mode**

When you use this feature, Panda Internet Security 2013 will continue to protect your computer but without interrupting if you are viewing full-screen videos, gaming online, etc.

### **USB vaccine**

This feature prevents viruses from running by exploiting the Windows AutoPlay feature which allows multimedia files in removable (CD, DVD or USB) drives to run automatically when they connect to the computer.

# FAQs

## What is the activation code?

When you buy Panda Internet Security 2013, you receive a code which lets you activate the product so that you can keep it up-to-date and protect your computer against the threats that appear every day.

## Where can I find the activation code?

This will depend on whether you have a CD or have bought the product directly from the Internet:

- If you have a CD, you will find the code on the CD envelope.
- If you have bought the product on the Internet, you will have received the activation code by email after buying the product.

This code lets you activate Panda Internet Security 2013 using a simple wizard. Refer to the **Product activation** section of this guide for more information.



### NOTE:

If you can't remember your client details, go to the Password Reminder section of the Panda Security website: <http://www.pandasecurity.com/homeusers/support/details/password/>.

## How can I activate licenses on several computers?

If your product has several licenses, you can install it on as many computers as licenses you have contracted.

In this case, **you must activate the product on each of the computers on which you have installed it.** To activate the licenses on additional computers, you'll need the details we sent you via email when you first activated the product: your client number and activation code.

In addition to this information, in this wizard you will have to enter the same email address you used when first activating the product.

Once activated, Panda Internet Security 2013 can update itself and will therefore protect your computers against the threats that appear every day. For more information, refer to the **Product activation** section of this guide.




#### IMPORTANT:

Remember that although you must activate the product on each of the computers on which it is installed, optional registration is only carried out once.

### How can I activate a trial version?

If you have downloaded a free trial version, you may only use it for a limited period. For Panda Internet Security 2013 to operate during this period, you will have to activate it by following these steps:

1. Click the icon  and select **Activate the product** on the Panda Internet Security 2013 main screen.
2. On the activation wizard welcome screen, select **Activate the trial version**.
3. Click **Next**.
4. Wait until the activation process is complete and click **Finish**.

You will not need an activation code to activate a trial version. If you want Panda Internet Security 2013 to continue protecting your computer after the trial period, you must buy the product and activate it using the activation code you will receive on buying it.



#### NOTE:

If you have a VIP protection card, you will need the activation code printed on the card to activate the product.

### How can I reinstall the program if I've formatted my hard disk or changed my computer?

If you have formatted your computer, changed to a new one or need to reinstall Panda Internet Security 2013 for any other reason, you can use the installation CD or download the latest program version from our website.

- Download the latest version:  
<http://www.pandasecurity.com/homeusers/downloads/clients/>
- Can't remember your login details? Go to the Password Reminder page:  
<http://www.pandasecurity.com/homeusers/support/details/password/>



#### NOTE:

Remember that to download the latest version of the product you must have registered as a Panda Security client.



Once you are in the client downloads area, follow these instructions:

1. Click **Download**.
2. Enter the user name and password provided and click **Enter**.
3. In the **Downloads available for...** section, click the **Software** folder.
4. When you open this folder, you will see the files corresponding to your product. Click on the master (complete program) for your computer's operating system.
5. Save the file to your hard disk. We recommend you create a folder on your C: drive called 'Panda' for example, and select this location to download the file.
6. Once the download is complete, go to the folder you have saved the file to and double-click it to begin the installation.

### **Do I have to uninstall Panda Internet Security 2013 before installing a new version?**

If you want to install a new version of the antivirus or a different product, you must first uninstall Panda Internet Security 2013.

### **Can I install Panda Internet Security 2013 if I already have another antivirus installed?**

If you have another IT security solution installed, either from Panda Security or any other company, it will be necessary to completely uninstall it before installing Panda Internet Security 2013. This is due to the fact that there can be conflicts between the automatic protections of different security solutions.

### **When do my product services expire?**

Once you have activated the product services, you can see the date when they expire in the status area on the main program screen. Click it to see your client data.

When your license is about to expire, Panda Internet Security 2013 will notify you through pop-up warnings through which you can renew the product.

### **How can I renew my product services?**

When your service contract period is about to expire, you can renew it simply from our website: <https://shop.pandasecurity.com/renewals/>.

# TECHNICAL SUPPORT SERVICE

Visit the Technical Support Center where you will find up-to-the-minute information about the product:

<http://www.pandasecurity.com/homeusers/support/>

If you have not found the answer to your question on the website, fill out our online form and one of our technicians will reply as soon as possible:

<http://www.pandasecurity.com/homeusers/support/contact?lng=1>

In addition, it is highly advisable to visit out **Technical Support Forum**, (<http://support.pandasecurity.com/forum/>) where you can resolve your queries, make suggestions and exchange ideas with other users.

Finally, if you need to contact our technical support department in your country, you'll find the relevant email address and phone number at:

<http://www.pandasecurity.com/about/contact/>



