

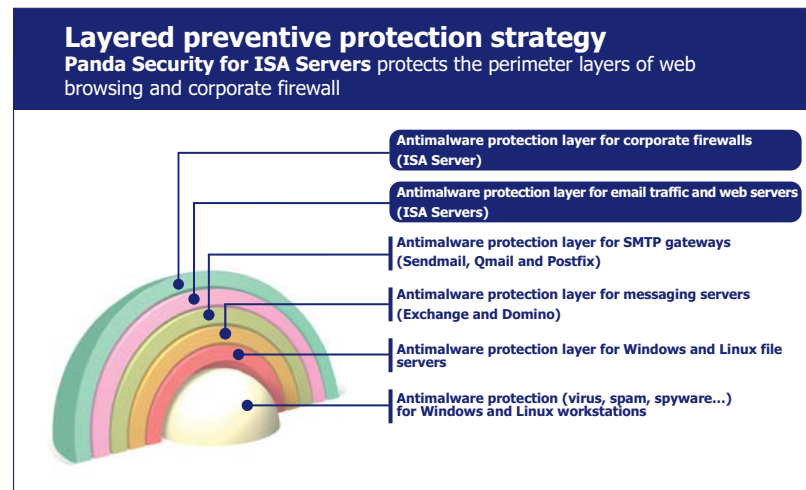
Is a corporate firewall enough to keep my company's external communication free from viruses and intruders?

ISA (Internet Security and Acceleration) is Microsoft Corp's corporate firewall and web server. In addition to administering employees' Internet access, with ISA server it is possible to shut down protocols and communication ports which are unnecessary and vulnerable to attack. Nevertheless, ISA server also needs to be complemented with a component that analyzes the traffic passing through permitted protocols in order to filter out dangerous or unproductive content such as spam.

You need a solution that blocks malware and integrates with ISA

Panda ISASecure is the antimalware protection that scans and disinfects, using a web (ISAPI) and application filter, files in all formats sent and received through HTTP, SMTP and FTP (over HTTP) as they pass through the Microsoft ISA server.

This antimalware solution protects against viruses, worms, Trojans, spyware, adware, spam, hoaxes, phishing, dialers, hacking tools, security risks, etc. ISASecure is the perfect complement to the protection provided by the security modules and proxy cache in MS ISA servers, offering added value through an innovative content filtering module.



Main benefits

- Allows **simple and centralized management**, deployment, monitoring and definition of security policies.
- Allows **real-time decision** making.
- **Protects** your ISA servers **on all levels**.
- **Boosts** administrator and end-user **productivity**.

Key features

- **Armor-plating for SMTP email** against phishing and hackers. This solution is capable of disinfecting viruses in nested messages and compressed files at all levels.
- **Versatile content filtering** with VIP users for Internet and SMTP mail use.
- **Optimized performance** thanks to the combined use of *PartFile* and *VirtualFile* technologies, and support for 64-bit processors.
- **Powerful heuristic engine for web pages**, for detecting viral code not just in HTML, but also files contained on the web page.
- **Remote centralized administration** of the network, with multiple server views, graphic reports and centralized quarantine for managing suspicious items.
- **Hourly automatic updates** of the malware signature file.
- **Flexible settings** with customized warnings.



Email armor-plated against attacks

Panda for ISA prevents the spread of email infections. Detects phishing and scans nested messages at various levels, attachments and compressed formats such as ZIP and ARJ. It even **detects network viruses in packets** and other viruses in OLE objects embedded in the message body.

In addition, if the infected message has been automatically generated by a worm, the **message is completely deleted**, as neither the attachment nor the message have any value for the recipient.

Content filtering for SMTP mail and HTTP traffic

With the content filter for SMTP mail, you can filter **encrypted messages**, create filter rules to combine several criteria (subject and message body, name, extension and content of attachments) to eliminate external references, suspicious compressed files or unwanted senders.

The **Panda for ISA** HTTP filter allows certain IP addresses and VIP users to download files without restrictions when using the Internet. It also lets you import blacklists of computers that cannot access web pages.

It also includes a filtering system based on the use of passwords or macros, and the size, extension, name or MIME type of downloaded files. This module also guarantees that Java applets, ActiveX controls and scripts are blocked before they are downloaded by the user.

Optimum performance

Panda's *VirtualFile* technology **scans all files in memory** -even compressed files- much faster than if they had to be copied to hard disk.

It also includes *PartFile* technology which allows the network administrator to control the performance/security balance in the ISA server, retaining only suspicious files to be scanned and disinfected.

Powerful heuristic engine

Its powerful and advanced HTML scan engine is capable of detecting and destroying viruses and malicious objects hidden in Web pages before they get through to internal network users.

Panda for ISA also incorporates the *Genetic Heuristic Engine* (GHE) a powerful feature which is highly effective in detecting new threats, allowing suspicious items to be quarantined temporarily until Panda can disinfect them automatically.

Remote, centralized administration

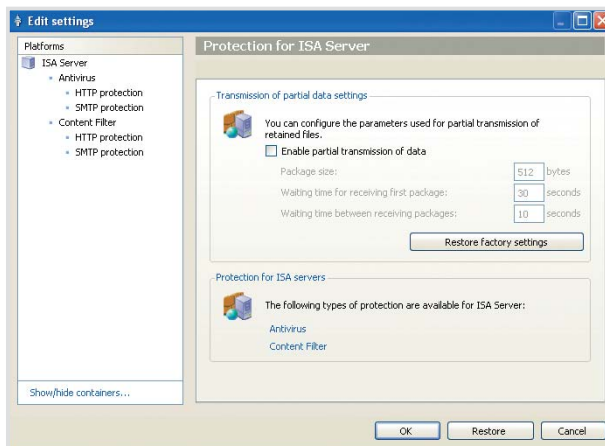
Panda for ISA is managed remotely and centrally through a single interface: **Panda AdminSecure**. Through this tool, all the Panda solutions are installed, updated and monitored, with real-time views, reports, alerts, etc.

So, instead of individually managing each server or protection (antivirus, antispam, antispysware...) installed in the servers, a single console is enough. **AdminSecure** can consistently administer all protection, even when deployed across heterogeneous platforms.

Hourly automatic updates

Panda for ISA can be configured to check new signature files hourly without user intervention, and updates automatically.

Incremental updates of malware signature files contribute to reducing total bandwidth usage and to soften the peaks produced in the communications.



Flexible configuration

Administrators receive warnings directly via SMTP mail or across the network with on-screen messages. These warnings can be configured with parameters to prevent saturation.

Technical requirements

Panda AdminSecure Console

Pentium II 266 MHz or above.
RAM: 140MB.
Hard disk free space: 140MB.
Internet Explorer 5.5.
Windows installer 2.0.

AdminSecure operating systems: Windows 2000 / XP / XP 64 bits, Windows NT4 SP6 and Terminal Server, Windows 2000 Server SBS, Windows Server 2003 Enterprise Edition/SBS/R2, Windows Server 64-bit, Windows Vista 32 bits/64 bits, Windows Server 2008 (32 and 64 bits).

Panda Security for ISA Servers

ISA Server 2004 Standard or Enterprise

Pentium III 550MHz or above.
Minimum RAM 1GB.
Local NTFS partition with 180MB minimum hard disk plus 60MB for the cache web content.

ISA Server 2006 Standard or Enterprise

Pentium III 733MHz.
Minimum RAM 1GB.
Local NTFS partition with 180MB minimum hard disk plus 60MB for the cache web content.

Operating Systems: Windows 2000 Server, Advanced Server SP 4 (or higher) or Windows Server 2003/R2.

"For all of us who receive lots of e-mail, having Panda Antivirus installed in our systems is a guarantee that viruses won't spread across our network."
Iñigo Arias. Marketing Director Hypermarkets. Eroski Group. SPAIN.



Remember **Panda Security for ISA Servers** can be bought separately or as part of **Panda Security for Enterprise**.